



GOOD MORNING

Have Good Trading Day

TUESDAY



Price is what you pay.
Value is what you get.

- Warren Buffet

MARKET PLUSE

INDIAN INDICES

NAME	CMP	NET CH.	%
SENSEX	28101	-134	-0.48
NIFTY	8525	-39	-0.46

INDIAN ADR'S

SYMBOL	CLOSE	GAIN/ LOSS %
DRREDDY	67.73	+0.70
HDFCBANK	63.03	+0.06
ICICIBK	10.17	+0.30
INFY	17.69	+0.91
TATAMOTOR	30.31	+1.17
WIPRO	12.57	+0.64

FII AND MF ACTIVITY

SYMBOL	In Crs.
FIIs Eq (Provisional)	-14.43
FIIs Index Future	612.96
FIIs Index Options	633.50
FIIs Stock Future	-426.30
FIIs Stock Options	-4.28
DII's Eq (Provisional)	-50.05

CURRENCY

RBI RATE	10-AUG-2015
RUPEE - \$	63.7590
EURO	69.8799
YEN 10	51.2200
GBP	98.7563

MARKET PLUSE

GLOBAL INDICES

NAME	CMP	NET CH.	%
DOW	17615	+241	+1.39
NASDAQ	5101	+58	+1.16
NIKKEI	20761	-47	-0.23
HANG SENG	24755	+235	+0.95
SGX NIFTY	8540	+15	+0.18

WORLD COMMODITIES

FUTURE	U\$\$	CHANGES
CRUDE	44.48	-0.48
NATURAL GAS	2.830	-0.012
GOLD	1097.2	-6.9
SILVER	15.140	-0.152
COPPER	2.3835	-0.0165

WORLD EVENTS

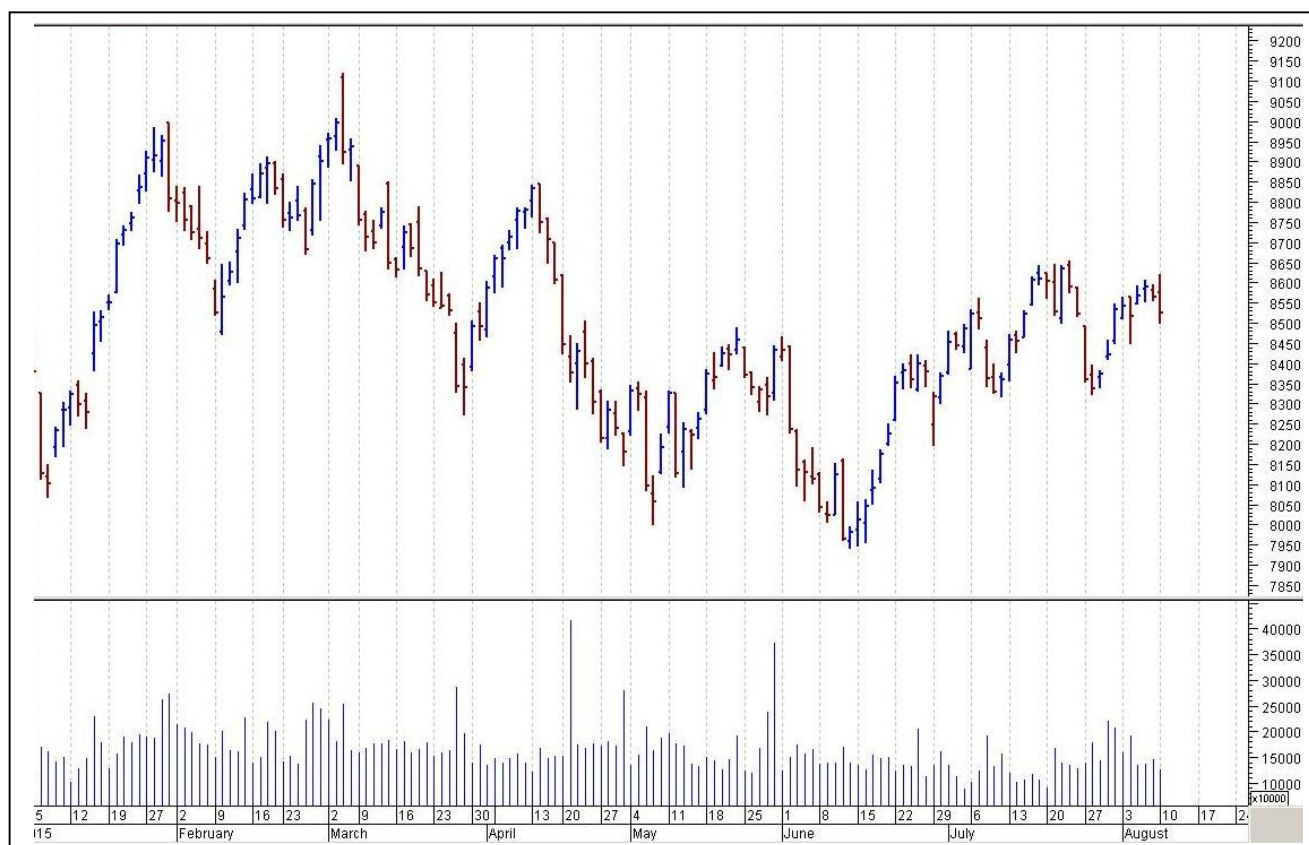
- US: Prelim Nonfarm Productivity q/q
- Prelim Unit Labor Costs q/q
- Mortgage Delinquencies
- UK:CB Leading Index m/m

TOP STORY

- HDIL Q1 Cons Net Profit Up 2.8% At `59.2 Cr Vs `57.6 Cr (YoY) Cons Total Income Up 6.7% At `266.7 Cr Vs `249.9 Cr (YoY)
- Power Grid Q1 Net Profit Up 20.2% At `1,366.5 Cr Vs `1,136.5 Cr (YoY) Total Income Up 19.7% At `4,717.5 Cr Vs `3,942 Cr (YoY)
- Engineers India Q1 Net Profit Down 29.4% At `56.8 Cr Vs `80.4 Cr (YoY) Total Income Down 10.3% At `390.5 Cr Vs `435.5 Cr (YoY)
- Allied Blenders drops plans to acquire Tilaknagar Industries over difference in valuations: ET
- Textiles Ministry to hold talks in September on remunerative cotton price
- Oil Minister Says GAIL To Hold Stake In TAPI As Global Firms Shun 4-Nation Project
- Blue Star shuts Thane plant owing to mounting losses (BS)
- US becomes 7th country to give clean chit to Maggi Noodles



NIFTY CHART



MARKET COMMENTARY

Indian equity markets closed with significant losses in Monday's trade. Traders were seen piling position in Realty, IT and Bankex stocks, while selling was witnessed in Oil & Gas, Infra and PSU sector stocks. For today's trade Nifty likely to trade in the range between 8540 – 8560 in the upper side and 8510 – 8490 in the lower side.

MARKET LEVELS

	CMP	SUPPORT LEVELS				RESISTANCE LEVELS			
NIFTY	8525	8510	8490	8450	8410	8540	8560	8585	8620
USDINR	64.10	64.02	63.96	63.84	63.7	64.18	64.24	64.35	64.4



FUTURES CORNER

SCRIPS	CLOSE	SUPPORT	TARGET		REMARKS
		STOP LOSS	T1	T2	
JINDALSTEEL	82.15	80.5	84	85.5	TRADING CALL
GLENMARK	1050.15	1039	1075	1085	TRADING CALL
M&MFIN	259.75	256	267	272	TRADING CALL

EQUITY CORNER

SCRIPS	CLOSE	SUPPORT	TARGET		REMARKS
		STOP LOSS	T1	T2	
ASHIANA	214.9	210	228	235	TRADING CALL
--	--	--	--	--	--

DELIVERY BASED CALL / INVESTMENT CALL

SCRIPS	CMP	SUPPORT	TARGET		REMARK
		STOP LOSS	T1	T2	

BULK DEALS (BSE)

SCRIP	CLIENT NAME	BUY/SELL	QUANTITY	PRICE
PANCM	CLSA GLOBAL MARKETS PTE LTD	S	172,411	60.28
SALZER	OCEAN DIAL GATEWAY TO INDIA MAURITIUS LIMITED	S	100,000	304.32

BULK DEALS (NSE)

SCRIP	CLIENT NAME	BUY/SELL	QUANTITY	PRICE
GHCL	R.B.A.FINANCE & INVT. CO	BUY	1167000	135.62

SCRIP'S IN F&O BAN

(To resume for normal trading below 80% of market wide limit required)

AMTEKAUTO, IBREALEST



NIFTY 50 STOCKS: SUPPORT & RESISTANCE						
Symbol	Close	Support 1	Support 2	Pivot Point	Resistance1	Resistance2
ACC	1385.75	1390.08	1380.52	1401.82	1411.38	1423.12
AMBUJACEM	226.65	227.08	225.67	229.37	230.78	233.07
ASIANPAINT	902.15	887.77	876.88	906.08	916.97	935.28
AXISBANK	575.90	575.90	571.50	580.40	584.80	589.30
BAJAJ-AUTO	2554.60	2516.60	2495.80	2549.30	2570.10	2602.80
BANKBARODA	182.10	182.87	180.73	185.78	187.92	190.83
BHARTIARTL	410.20	408.80	406.00	412.90	415.70	419.80
BHEL	272.45	249.62	233.08	266.78	283.32	300.48
BOSCHLTD	26027.35	25777.73	25519.07	26138.87	26397.53	26758.67
BPCL	946.70	934.50	913.50	948.75	969.75	984.00
CAIRN	163.95	165.17	163.53	166.93	168.57	170.33
CIPLA	715.25	709.48	703.82	719.17	724.83	734.52
COALINDIA	407.95	406.53	398.37	420.32	428.48	442.27
DRREDDY	4259.70	4234.23	4209.62	4254.62	4279.23	4299.62
GAIL	344.05	339.38	336.92	343.02	345.48	349.12
GRASIM	3773.35	3727.50	3646.30	3785.20	3866.40	3924.10
HCLTECH	936.45	934.15	928.95	940.70	945.90	952.45
HDFC	1305.50	1291.03	1283.62	1303.02	1310.43	1322.42
HDFCBANK	1094.65	1088.33	1084.02	1092.92	1097.23	1101.82
HEROMOTOCO	2703.95	2640.10	2618.35	2654.80	2676.55	2691.25
HINDALCO	107.80	107.62	105.68	109.93	111.87	114.18
HINDUNILVR	906.15	900.82	896.78	904.93	908.97	913.08
ICICIBANK	309.60	308.22	306.28	310.38	312.32	314.48
IDEA	163.90	165.33	163.72	168.12	169.73	172.52
INDUSINDBK	944.40	939.43	931.92	949.52	957.03	967.12
INFY	1086.00	1082.40	1069.20	1091.70	1104.90	1114.20
ITC	320.95	322.43	320.42	324.02	326.03	327.62
KOTAKBANK	707.30	700.07	695.13	706.28	711.22	717.43
LT	1820.75	1818.37	1803.28	1831.18	1846.27	1859.08
LUPIN	1695.95	1681.27	1668.13	1695.63	1708.77	1723.13
M&M	1359.70	1369.52	1348.73	1405.78	1426.57	1462.83
MARUTI	4497.15	4432.63	4412.32	4450.42	4470.73	4488.52
NMDC	104.40	102.83	101.67	103.67	104.83	105.67
NTPC	131.35	132.63	131.42	134.52	135.73	137.62
ONGC	275.05	273.62	264.38	278.78	288.02	293.18
PNB	159.10	157.77	155.63	160.28	162.42	164.93
POWERGRID	138.05	138.53	137.47	140.42	141.48	143.37
RELIANCE	968.90	976.33	968.32	985.17	993.18	1002.02
SBIN	282.75	278.17	275.03	283.33	286.47	291.63
SUNPHARMA	840.70	848.88	845.82	853.07	856.13	860.32
TATAMOTORS	385.70	385.20	377.00	390.60	398.80	404.20
TATAPOWER	69.10	68.58	68.07	69.37	69.88	70.67
TATASTEEL	261.15	259.95	257.85	262.25	264.35	266.65
TCS	2572.10	2541.70	2531.35	2557.35	2567.70	2583.35
TECHM	530.95	529.27	523.38	537.33	543.22	551.28
ULTRACEMCO	3174.55	3181.80	3161.15	3210.65	3231.30	3260.15
VEDL	127.80	128.07	126.83	129.73	130.97	132.63
WIPRO	563.45	564.80	560.50	570.35	574.65	580.20
YESBANK	816.75	817.30	813.15	823.50	827.65	833.85
ZEEL	409.60	405.57	400.73	411.63	416.47	422.53



CORPORATE ACTION / BOARD MEETINGS

NSE Download Ref.No.:NSE/CML/3028:- Suspension of trading in securities of Company Clutch Auto Limited for non-compliance of certain clauses of Listing Agreementw.e.f 11-Aug-2015

NSE Download Ref No :NSE/FAOP/30304:- Exclusion of Futures and Options contracts on JPPOWER wefSeptember 25, 2015

NSE Download Ref No :NSE/FAOP/30449:- Revision of Market Lot of Derivative Contracts on Indices. Only the far month contract i.e. November 2015 expiry contracts will be revised for market lots wef August 28, 2015. The new market lot will be as follows: NIFTY - 75, BANKNIFTY- 30, CNXIT- 45, CNXINFRA- 150, CNXPSE - 150, NFTYMCAP50- 150

NSE Download Ref No : NSE/FAOP/30448:- Revision in Market Lot of Derivative Contracts on Individual Stocks. Only the far month contract i.e. November 2015 expiry contracts will be revised for market lotswef August 28, 2015. See Annexure in NSE circular for new market lot of individual stocks.

BOARD MEETINGS

COMPANY NAME	DATE	PURPOSE	RS. PER SH.
CIPLA	11-Aug-15	Annual General Meeting/Dividend	2
KPIT	11-Aug-15	Annual General Meeting/Dividend	1.1
RSYSTEMS	11-Aug-15	Dividend	3.3
KCPSUGIND	11-Aug-15	Annual General Meeting/Dividend	0.1
SAIL	11-Aug-15	Annual General Meeting/Dividend	0.25
ORIENTPPR	12-Aug-15	Dividend	0.1
BASF	12-Aug-15	Annual General Meeting/Dividend	4
LUMAXTECH	12-Aug-15	Annual General Meeting/Dividend	7
MERCATOR	12-Aug-15	Annual General Meeting/Dividend	0.2
MUNJALAU	13-Aug-15	Annual General Meeting/Dividend	2.5
HEXAWARE	13-Aug-15	Dividend	2
BHARTIARTL	13-Aug-15	Dividend	2.22
J&KBANK	13-Aug-15	Dividend	2.1
STAN	13-Aug-15	Dividend	
APLAPOLLO	13-Aug-15	Annual General Meeting/Dividend	6
FINANTECH	13-Aug-15	Dividend	5
SPECIALITY	13-Aug-15	Annual General Meeting/Dividend	1
ENGINEERSIN	14-Aug-15	Annual General Meeting/Dividend	2
GREENLAM	14-Aug-15	Annual General Meeting/Dividend	0.5
AVTNPL	14-Aug-15	Annual General Meeting/Dividend	0.3
PIDILITIND	14-Aug-15	Annual General Meeting/Dividend	2.9
IFGLREFRAC	14-Aug-15	Annual General Meeting/Dividend	2

NEWS & RUMOURS:

- Gold (Spot Dollar) major support = \$1078/\$1051 & Resistance = \$1134/\$1168.
- Crude oil range->\$40 to \$50.
- U.S. Stocks Rise amid Berkshire Deal after Shares in China Rally: - U.S. stocks rose, with equities rebounding from a weekly loss, after Warren Buffett's Berkshire Hathaway Inc. agreed to buy Precision Castparts Corp. and as stocks in China rallied.
- China's [stocks](#) posted their biggest gain in a month amid speculation the government will accelerate mergers of state-owned enterprises to bolster economic growth ("China started it off with a 5 percent rally, there was another test of the S&P 200-day moving average, plus merger activity with Berkshire and PCP kind of gave the market an excuse to rally this morning,"). Investors also speculated China will act to prop up growth following a wider-than-expected drop in exports.
- Copper bounces off 6-year low on hopes for China stimulus: - Copper prices bounced off a six-year low on Monday, as a recent batch of disappointing Chinese economic data fueled speculation policymakers in Beijing will have to introduce further stimulus measures to boost growth.
- Gold futures trade modestly higher after Fischer comments: - Gold prices traded modestly higher on Monday, after Federal Reserve Governor Stanley Fischer said that the Fed is concerned about low inflation and won't start to raise rates before it sees inflation returning to more normal levels.
- Crude oil futures rally after falling to 6-year lows: - Crude oil futures fell to six-year lows before rallying sharply as investors returned to the market to close out bets on lower prices, a move known as short-covering.

TRENDS & OUTLOOK – DATE: 11- Aug- 2015

PRECIOUS METALS:

COMMDITY (MCX)	S2	S1	PIVOT POINT	R1	R2
GOLD (Oct)	24550	24800	25000	25333	25630
SILVER (Sep)	32500	33800	34700	36300	37200

BASE METALS

COMMDITY (MCX)	S2	S1	PIVOT POINT	R1	R2
COPPER (Aug)	325	330	336	345	349
ZINC (Aug)	114.10	117.30	120.20	123.45	126.70
LEAD (Aug)	107.10	109.20	111.45	114.75	117.30
NICKEL (Aug)	675	691	707	736	759

ENERGY

COMMDITY (MCX)	S2	S1	PIVOT POINT	R1	R2
CRUDE OIL (Aug)	2640	2730	2820	2955	3060
NATURAL GAS (Aug)	168	174	181	186	192

DATE TALKS : TODAY'S ECONOMIC DATA :

German ZEW Economic Sentiment, Prelim Nonfarm Productivity, Prelim Unit Labor Costs, CB Leading Index, Wholesale Inventories.



Registered Office

Indira House, 3rd Floor, 5 Topiwala Lane,
Opp. Lemington Road Police Station, Grant Road (East), Mumbai - 400007.

Corporate Office

'Ramavat House' E-15, Saket Nagar, Indore - 452018 (M.P.)

Customer Care

Tel: +91-731-4097170/ 71/ 72/ 73/ 74 M. +91 93031 72345

Email: customercare@indiratrade.com www.indiratrade.com



INSTITUTIONAL DEALING UNIT

Africa House, 5, Topiwalla Lane, Lamington Road, Mumbai, 400007

Tel: +91 22 30080678 Fax : +91 22 23870767 Email : ie@indiratrade.com

Disclaimer

This report is for private circulation within the Indira Group. This report is strictly confidential and for information of the selected recipient only and may not be altered in any way, transmitted to, copied or distributed, in part or in whole, to any other person or to the media or reproduced in any form. This report should not be construed as an offer or solicitation to buy or sell any securities or any interest in securities. It does not constitute a personal recommendation or take into account the particular investment objectives, financial situations, or any such factor. The information, opinions estimates and forecasts contained here have been obtained from, or are based upon, sources we believe to be reliable, but no representation of warranty, express or implied, is made by us to their accuracy or completeness. Opinions expressed are our current opinions as of the date appearing on this material only and are subject to change without notice.